

words: Marilyn Mower  
photography: Jim Raycroft



# SOLANDGE

LÜRSSEN'S 85 METRE MOTOR YACHT REFLECTS ITS OWNERS' DESIRE FOR A YACHT FULL OF ENERGY AND FUN, FOR A JOYFUL ON WATER LIFESTYLE

THE LARGE EXTERIOR LIVING SPACES REFLECT THE TREND FOR OUTDOOR DECKS THAT MIRROR ALL THE INTERIOR FUNCTIONS FOR GUEST LIVING



To characterise the yacht *Solandge*, start with the word 'exuberance'. The word seems to have been borrowed from French and Latin specifically for her. Some yachts are minimalist, some are deco, and each with the ambiance its label implies. But with 85 metre *Solandge*, every inch makes sure you are having a good time, every element is about living life to the fullest. And it's not by accident. *Solandge*, says Richard Masters, the yacht's project and operations manager, had a long design incubation. 'The owners had another, smaller Lürssen that they had bought on the brokerage market and refitted. They knew they wanted to build their own yacht at Lürssen, so in 2007 they signed a contract for a slot that wouldn't even become available until 2010, which gave them a tremendous amount of time to refine their ideas,' he says. 'They looked at a great many yachts in the mean time, while a special team was assembled to help the shipyard implement the owner's plans.'

*Solandge* is nearly 20 metres longer and one metre wider than her predecessor, and

offers one more guest cabin – a full-beam VIP to swoon over. But as senior chief engineer Travis Ludbrook says, 'In terms of the technology that was available to the new build, the nine years makes a tremendous difference.'

Along with design details and an insistence on the comfort of everyone aboard, sound and vibration engineering were two hot button issues. Decibel levels were part of the construction contract, although Masters says the yard exceeded the requirement by 20 per cent in some places. 'It was a matter of pride to the guys at the Rendsburg yard, I think,' Masters says. *Solandge* is based on a modern 80 metre hull and engineering platform similar to that of *Phoenix*?, *Ace*, and *Quattroelle*?. 'The yard's record keeping is exceptional, if they find something they think is an improvement, whether it is a material or a process, they just adopt it.'

The folding and lowering stern stairs, an adaptation of those developed for use on *Quattroelle*?, are a good example. All custom yachts by definition present an owner's vision. With a yacht beyond 60 metres LOA, even a bit of tentativeness

The sauna, steam room, massage room, beauty salon and gym lead to a swimming pool, creating a resort complex on the upper deck. Up top, the owner's aft deck has a private spa pool.



THE FINAL PRODUCT IS  
A MIX OF GRACIOUS,  
SOFT SHAPES AND  
AGGRESSIVE HARD  
LINES AND KNUCKLES;  
OPPOSITE BUT  
COMPLEMENTARY



SOLANDGE



All spa pools onboard are mosaic-clad infinity tubs mounted above deck level. The upper deck spa pool (above left) can be covered with Perspex to create an extraordinary dance floor.

translates to a great deal of cautious, repetitive conservatism or worse, confusion that goes beyond eclecticism. Solandge is innocent on both counts. Both Masters and the yacht's interior designer, Aileen Rodriguez, begin their description of the yacht and her build process with the phrase, 'The owner had a vision.' That would seem to be an understatement. So would the designer's comment, 'They like bright colour.'

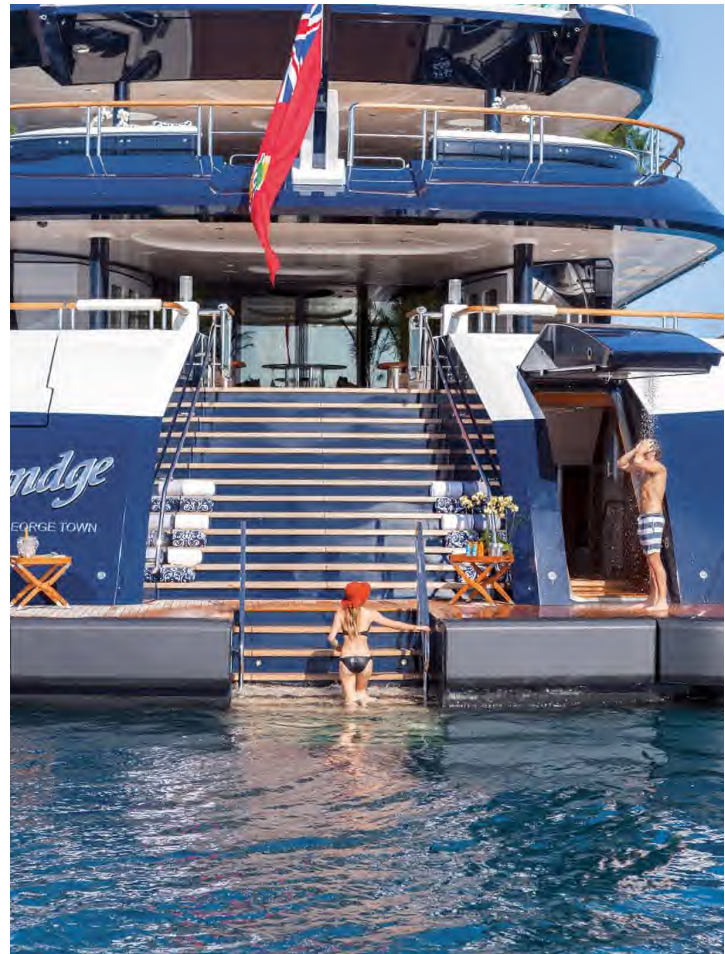
But to begin at the beginning, Espen Oino was asked to create a profile design based on the owners' experience with the previous vessel. This included all guest suites on the main deck along with a rather grand saloon area and an owners' deck above.

During the design period, however, Oino says it became clear that they were prepared to push boundaries and explore more innovative exterior forms. The final product is a mix of gracious, soft shapes and aggressive hard lines and knuckles; opposite but complementary languages that generate energy. The curves, he notes, are mostly in the longitudinal planes with the hard

edges on the transverse. The exterior paint scheme, especially the white sheer line, adds emphasis. In combination with the white boot stripe, it optically lowers the yacht's massive freeboard at the transom, making her seem less formidable to swimmers or those boarding from a tender.

Step two in the brief was to create many places for guests and family to hang out together or chill-out alone. Oino's directive was to give each deck and space a distinctive function plus create the supporting furniture and built-ins such as bars, buffets, dining areas, a pool and two hot tubs. With so much space to work with, he was able to incorporate an exterior cinema and nightclub with DJ station on the top deck, an indoor/outdoor gym, a sheltered main deck reception area aft and a private outdoor seating area in front of the owners' suite. Captain Maxx Ainsworth adds, 'We were able to fit in a substantial tender garage, a full dive centre and a sauna aft with access to the swim platform.'

Aileen Rodriguez, an American designer based in Fort Lauderdale, Florida, worked on the refit of the previous







The tree (opposite) sculpture runs from the tank deck up and contains 1,423 points of light. Solandge cruises with 29 crew, including a professional masseuse (below right)

yacht, and was working with them on a residence. Because of those other projects, she notes, 'I could show them designs or materials and almost immediately know if I was on the right track rather than spend months assembling presentation boards that might not have been accepted.'

Pushing boundaries was also an aspect of the yacht's interior, both in scope and detail. To achieve an open plan living area on main deck, the spacious aft deck opens onto a multi-functional saloon of more than 172 square metres, unbroken by supports. Rodriguez took a careful approach to the selection of interior objects, furniture and art pieces, travelling to Venice to pick Murano pieces from the artists' workshops. As a result, there is a stunning collection of glass instruments in the saloon. 'The colour of the art glass instruments became the palette for the entire room and music became its theme,' says Rodriguez.

Setting the tone for the exuberant, joyful fantasy named *Solandge* is the saloon entrance, two stunning, floor-to-ceiling panels of LED backlit amethyst quartz. The stone is sliced thin and pieced together like a mosaic



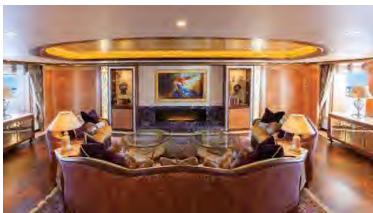
The main saloon (right) is a multi-functional space of more than 172m<sup>2</sup>. A lounge aft of the owner's suite (bottom) has a fireplace, while the tank deck is a sensible spot for the cinema (below)

and sandwiched between clear glass. To port it is flanked by a Bechstein piano and to starboard by a Venetian console table. The large bar on port is also decked with amethyst and honey onyx, the stone that borders the hardwood floor.

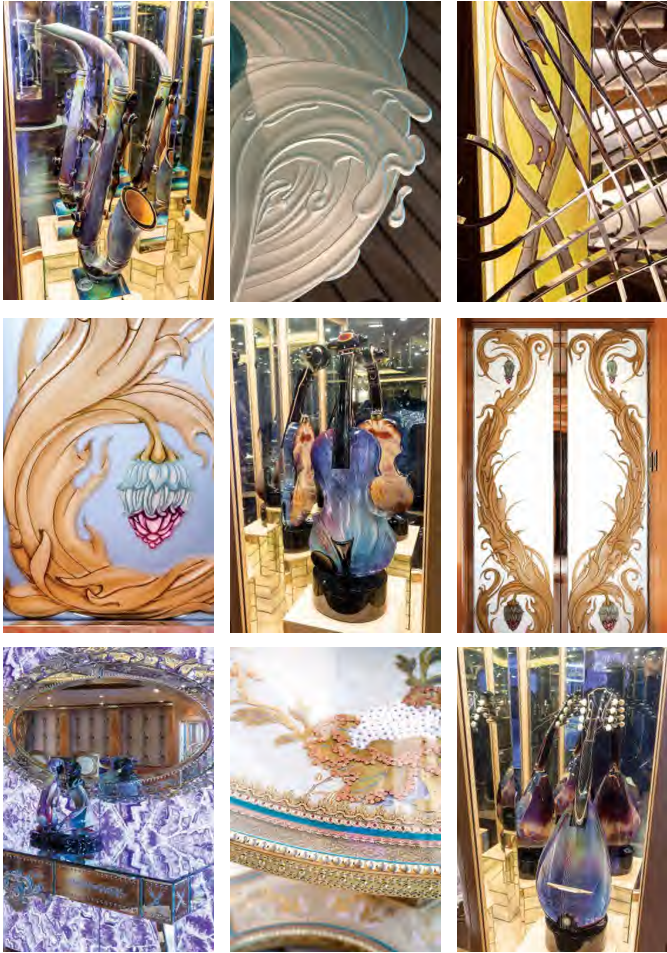
Opposite the bar is a cosy seating area, then a massive dining table fitted fore and aft under Schonbek chandeliers dripping with amethyst and rose quartz crystals, and neatly engineered not to rattle. Forward of the dining area is a much larger seating area facing a fireplace and a TV screen concealed behind a painting of a musician. This is just one of the numerous spots throughout the yacht that is wired for karaoke – the owners sent their build engineer to discover the robust, high-end karaoke equipment used in the best clubs and bring the same Studio Evolution system to *Solandge*.

The yacht is divided at its axis by an atrium lobby dominated by a 15 metre lighted sculpture that has come to be known as the tree of life. It's nexus was a request from the owner for something running the entire height of the vessel from the tank deck. Made in California, the sculpture contains 1,425 points of light, and is encircled by a magnificent stainless steel and leather banister that anchors the floating staircase.

Among the details chosen by the owner are the 25-plus wood veneers. He selected woods and grains that







appealed to him and left it up to Rodriguez to determine their use. The further up in the yacht you go, the lighter the woods become. For example, the use of straight grains and burls juxtaposing light and dark tones in the main saloon evokes a hint of Biedermeier style, but only as a backdrop, as the furniture pieces – both transitional as well as period with brocades and bullion fringes – neatly bridge the centuries. Forward of the lobby, the guest cabins are more modern, each with a different colour scheme. One is convertible to a guest office/media centre, while the VIP suite can be converted from a cabin with attached sitting room to two separate cabins. Each half makes a spacious cabin, but together, the suite with its large windows, closets and bath seems suitable as a master. That is, until you see the master suite on the deck above.

On the owner's deck, the apartment includes a private office, his dressing room and bathroom and her dressing room and bathroom and then the cabin itself with 180° views overlooking the bow, outdoor seating and a private spa pool. All the spa pools

mounted above deck level. Water flows over the top edge into a recess below teak grating. This keeps the pool and its surround from being a major, view-blocking structure.

Back inside the owner's suite, a casual sitting room aft has a fireplace and a nautical theme, with a colour scheme similar to the sky lounge. Handmade Italian furniture includes a small table and chairs, a lady's desk with a leather top and a chest of drawers, while hand-painted backlit window mullions depict themes from the Garden of Eden.

Guests meanwhile, can enjoy a top-notch spa facility aft on the bridge deck. Facilities consist of a spacious sauna, steam room, massage room and a beauty salon connecting to the gym and outdoor swimming pool. A colour-shifting glass bubble wall provides ambience and privacy for the massage suite. All this creates a full-feature resort complex.

The sundeck is large and multi-functional as per the owners' directives. One beach-chic section features U-shaped seating under draped tent material. The centre deck focuses on a horseshoe-shaped bar with gold mosaic finish, while tucked away to starboard is a romantic bed-size platform piled high with

For crossing, the three chandeliers in the dining saloon are wrapped in cocoons. The 10m seas encountered in Solandge's maiden trip to the Caribbean left them unharmed.



THE VIP SUITE WITH ITS LARGE WINDOWS, CLOSETS AND BATH SEEMS SUITABLE AS THE MASTER. THAT IS, UNTIL YOU SEE THE MASTER SUIT

cushions under a twinkly star overhead. With the open sunning space in full entertainment mode, the deck hosted 60 people for a New Year's party. Guests thoroughly enjoyed a unique dance floor above the spa pool. 'The idea of a Persex dance floor was easy enough to imagine,' says Masters. 'But then we had to figure out how to lock it in place, store it, and oh-by-the-way give it a railing so no one would fall off.' Figure it out they did, and the unique, floating sundeck dance floor area can be lit for parties.

'The large exterior living spaces reflect the current trend for outdoor decks that mirror all the interior functions for guest living,' says Öino. 'Arranging spaces to lounge, eat, drink and play becomes a major factor. The outdoor furniture on *Solandge* is complex and incorporates edge lighting and features that allow entertaining to be spontaneous.'

'Which is a good place to bring up the service aspects built into *Solandge*; they are exceptional. 'The owners care about service, but they care even more about the well-being of their crew,' said Masters, 'and he respects their input.' In

The VIP suite (above) features gold onyx details such as the chest at the foot of the bed that hides a pop-up TV, plus gold and mother-of-pearl inlays. It can be converted into two cabins.

fact, 11 of the crew came with Captain Ainsworth from the previous boat, including a pair of sisters and a father and son team. Crew pathways throughout the boat are ample and clever, there is no need to squeeze by each other with a load of laundry or supplies. The deckhands were given free rein to plan the location of all their supplies and tools on each deck so there is no time wasted running off to a central bosun's locker. *Solandge* is the first Lürssen with crew passage access from both levels of the engine room and it clearly increases efficiency and eliminated traffic jams. Engineers have a dedicated workshop separate from their control room, there's a workshop in the dive centre and an office for the chef and chief stewardess next to the crew mess and opposite the custom galley designed by the chef with features that enable everything from handmade chocolates and pastries to copious amounts of ice cream.

Mechanically, *Solandge* is similar to her just older sibling, *Quattroelle*, and while the former's dark blue





THE CABIN ITSELF HAS 180° VIEWS OVERLOOKING THE BOW, OUTDOOR SEATING AND A PRIVATE, MOSAIC-CLAD INFINITY SPA POOL.

hull had no impact on the yacht's air conditioning requirements – such is Larsen's standard insulation package – Ludbrook did specify an additional watermaker with its own storage tank forward. It takes 15 tonnes of water just to wash the boat,' he says.

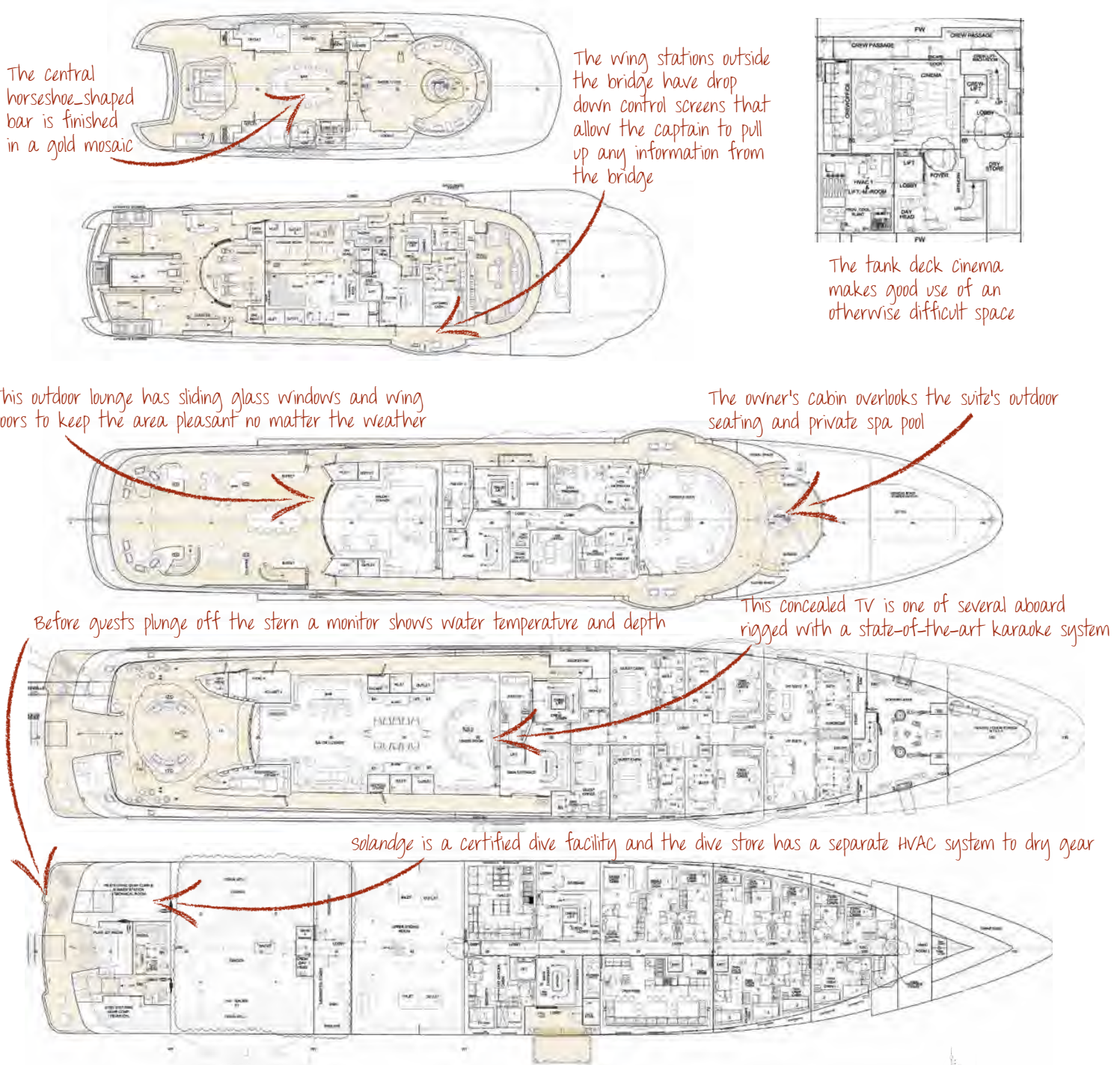
With great attention to indoor layout planning, the pantries are large and smartly integrated into the portside interior and exterior crew circulation. A separate crew lift makes it possible to transfer things and people or to bring wine from the 500-bottle 'cellar' on the tank deck. The guests have their own lift, a nine-passenger affair. Ludbrook notes that three generators allow engineers to mix and match the power being generated for best efficiency, while a dedicated 115V transformer in the bow creates pure sine wave power for iPads and phone chargers, equipment brought onboard by American charter guests and the chef's ever growing collection of specialty appliances.

Reflecting on the project, process and its conclusion, Rodriguez says, 'The owners wanted every inch of this vessel to be special and have a meaning. It's difficult to design eighty-five meters of "special", but I believe that we have accomplished this for them in a very controlled way. We think it's their dream come true.' And a joyful one at that.

The master cabin (opposite) has 180-degree views over the bow and spa pool. Rodriguez ordered a slight pink tint to the joinery in the cabin's 'her' en suite to match the marble (bottom)



# SOLANDGE



## SOLANDGE Lürssen

**LOA** 85.1m  
**LWL** 71.59m  
**Beam** 13.8m  
**Draught** 3.9m  
**Displacement**  
 2,060 tonnes  
**Gross tonnage**  
 2,899GT

**Engines**  
 2 x CAT 3516C at 2,000kW  
**Speed (max/cruise)**  
 17 knots/14.5 knots  
**Range at 12 knots**  
 6,000nm  
**Thrusters**  
 Brunvol bow, Schottel stern, 240kW each

**Stabilisers**  
 Quantum XT 2400  
**Generators**  
 3 x Caterpillar C18  
**Fuel capacity**  
 220,000 litres  
**Freshwater capacity**  
 35,000 litres

**Owner and guests** 14  
**Crew** 29  
**Tenders**  
 1 x 12m Fjord; 1 x 10m Naiad; 1 x 6.5m Fassemer rescue tender  
**Construction**  
 Steel hull, aluminium superstructure

**Classification**  
 Lloyd's Register  
**Naval architecture**  
 Lürssen Rendsburg  
**Exterior design**  
 Espen Øino Design  
**Interior design**  
 Rodriguez Interiors

**Owner's representative**  
 Master Yachts International  
**Builder/year**  
 Lürssen/2013  
 Bremen-Vegesack, Germany  
 t: +49 421 6604 166  
 e: yachts@lurssen.com  
 w: lurssen-yachts.com