

SuperYachtWor

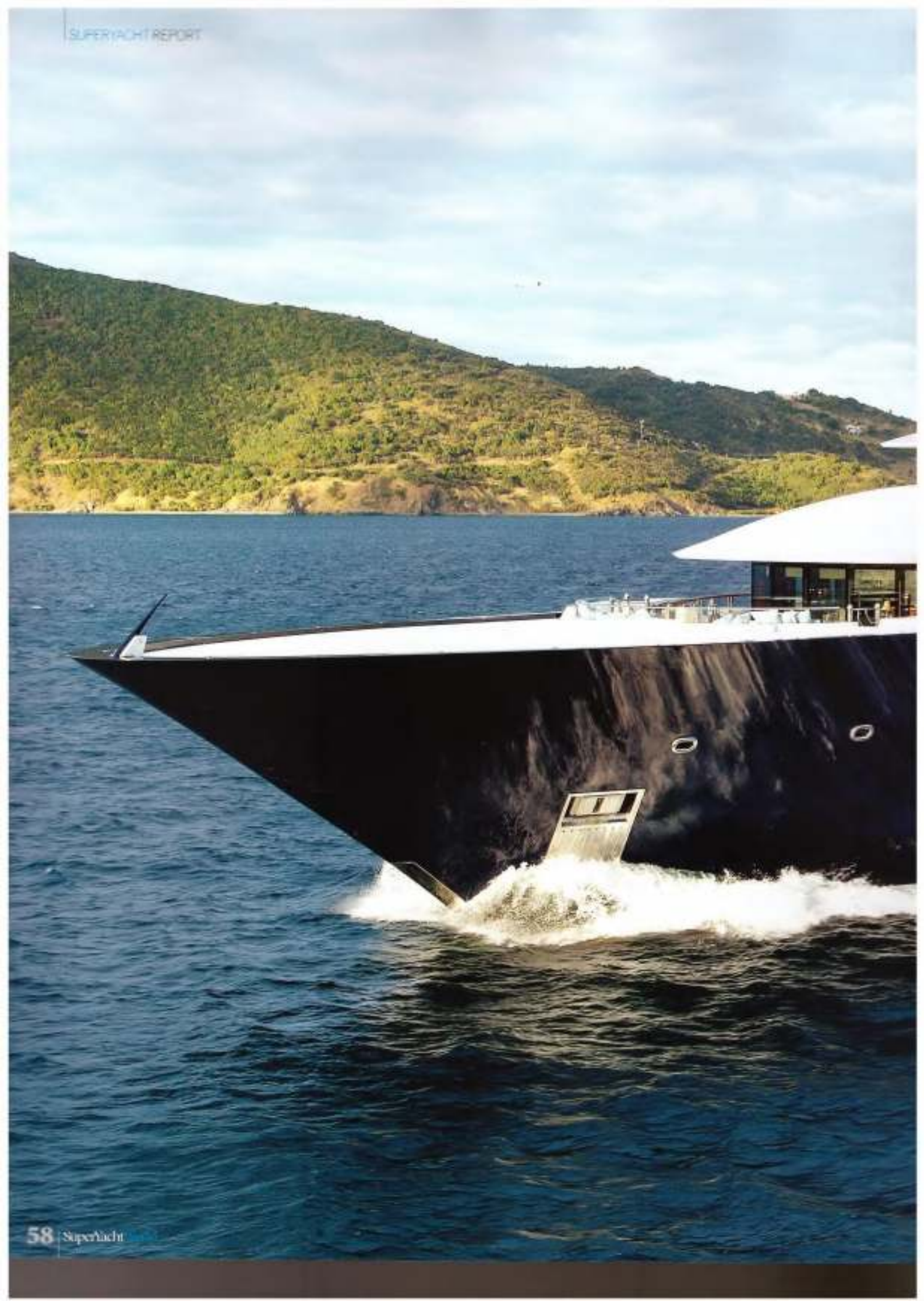
The global magazine for supery

MAGIC MONACO

The new yachts lighting up this
year's Monaco Yacht Show



A home on the sea
Solandge: Lürssen's
Feadship Heritage
Monaco GP: From
Chris Cecil-Wright
Bows and vows: A su





Solamidge

An 85-metre Lürssen created by an experienced owner to suit a range of guests Mike Edwardson

Photography: Klaus Jordan



There's something metaphorically appealing about the idea of a Tree of Life – it's a reassuringly organic and graphical notion, and it stresses the point that everything is linked somewhere along the line in a nurturing kind of way. Even the small things are part of a bigger picture. I found myself musing about all of this as I stood on the main deck and stared up and down at the wonderful 'Tree of Life' sculpture that rises from the tank deck to the sundeck of the 85-metre Lürssen Solandge.

Rising 16 metres in total, and incorporating more than 1,200 points of light, the artwork has been created in 22 karat gold leaf, hand-made Murano glass flowers, and decorated with precious stones. It's a striking piece, and fulfilled the team's brief for "something running the entire height of the vessel", says interior designer Aileen Rodriguez.

It's a breathtaking moment for guests when they arrive on board at the main foyer, where the onyx-inlaid

floor, antique-style mirrors and hand-carved glass elements have a lot of fun with the available light. The interior throughout is an eclectic mix – "classical touches with a contemporary backdrop", is how Aileen Rodriguez puts it.

Solandge's experienced team wanted the interior, by the use of certain colours and textures, to capture landscapes and moods from a moment in time. The level of service that could be delivered aboard the yacht by the 29 crew was the number one priority, and the spacious and meticulously designed crew areas ensure they are well catered for, while the layout of the entire yacht allows for an efficient crew flow-through without disturbing guests.

And it's not just inside that the guest experience has been a priority. "The goal of the exterior design was to make all the decks inviting and useful at all times. Each has a distinct function for all-round enjoyment in a relaxed setting, whether you want to enjoy the large owner's deck with private Jacuzzi and sunbathing



Above: The seating area on the after part of the sundeck can be shaded and enclosed to create a tent-like retreat.
Left: The hot-tub is surrounded by a wonderful semi-circle of seating.
Right: At night the area converts to a dance floor.
Facing page, above left: A central bar area and grill ensures that guests on the sundeck are well catered for.





"The goal of the exterior design was to make all the decks INVITING and USEFUL."



Above: The six-metre jet-flow pool dominates the bridge deck.

Right: Steps up to the raised pool, close to the gym area.

Far left: The wellness area includes a hammam with a Swarovski light design feature in the ceiling.

Left: A massage and beauty room – there is a therapist on board.

Below: The sauna has a shower nearby and is only a few steps from the pool.

Facing page, top: Tucked-away seating and bathing areas around the pool.





area, or the chill-out nooks, the exterior cinema and nightclub, the swimming pool, or the wonderful dining areas and evening sauna and cocktail areas," the owner says.

Judging by guest feedback, it is a proposition that has become reality. "From our recent experience, this layout contributes to both great relaxation and vitality. The interior and exterior is suitable for all nationalities, all ages, all types of fun and pleasure in timeless comfort," the owner adds.

A further design element was for a sundeck that has the wow factor, and you don't need to spend much time in the upper reaches of Solandge to discover that the yacht delivers. The sundeck makes full use of the yacht's 13.8-metre beam – it feels huge – and there is a very relaxed beach-resort chic reflected in the seating areas. The central horseshoe-shaped bar area is dressed in gold mosaic, while the exterior furniture has some great bespoke features – they boast integral lighting and they are upholstered to interior standards

of comfort. The area is sedate, and great for snacking with drinks or simply just relaxing.

And very quickly this whole part of the deck turned into party central. Cleverly tucked away storage areas and ready to be placed on raised platforms are the hi-tech DJ decks, with thousands of digital tunes pre-loaded on a hard drive, so any party will find something they like. The real magic happens a little further forward, where the space quickly be converted into an intimate and cool raised dance floor.

On the deck below, the design team was equally specific about the wellness centre. They didn't sort of sauna where only two guests can fit at a squeeze. The sauna space on Solandge is much more comfortable for guests to come and move around. As you look up, the tiny lights etched in the ceiling give you a sense of otherworldliness. Indeed, this surprising aesthetic sense extends to a spacious steam room, which also has a ceiling



encrusted with tiny lights, as well as highly polished mini-mosaic square tiles. In the massage room the soft bubble wall is fitted with an ever-changing array of coloured lights, and there is also the relaxing sound of running water, adding a little visual and aural magic to one's inner peace. Next door to this, the beauty salon is just as spacious as the other wellness rooms.

It's right to characterise the owner's deck as an apartment – on a yacht this size you get the kind of spaces that mean they can have a feel of the domestic rather than the maritime. Aileen Rodriguez has worked with the owner on previous projects so had the perfect handle on the kind of emotional and practical features that had to be delivered. There is a good-sized office with library spaces ensuring this is a suitably hushed and business-like environment. Inside the main suite, the bed is positioned strategically in order for the occupants to look through the 180° windows on to the world outside.

The spaces perfectly reflect the designer's eclectic approach – the free-standing dressing table makes you think of historic France, but in the blink of an eye you see the more contemporary Chinese lacquer. It's a case of different design eras, all working together to make something very special. The supporting columns – which could so easily have been left as a redundant chunk of background décor – have been decorated with garden views and illuminated to create a very relaxing environment.

The his'n'hers bathrooms are characterised blue and pink, and there are some exquisite examples of stonework here, with striking golden onyx and rose quartz in hers. The walk-in wardrobes are equally well appointed but the appeal of the suite is not just internal, the occupants of the owner's suite can go through the side doors to the forward seating and hot-tub area or the wing seating.

On the main deck, the guest spaces are no less impressive. There are five in total, and each cabin has





The owner's deck spaces have the feel of an apartment, DOMESTIC rather than the maritime



Above: The owner's deck lounge is dominated by the three-tonne crystal dome.
 Facing page, top: The bar has been configured as an island unit to port.
 Facing page, below: Dining for 14 around the table. Glass screens can enclose the sides of this area.
 Facing page, far left: Access forward to the wing settees.
 Left: The master bedroom, with a light feature by Crystal Caviar.
 Far left: Back-lit glass columns are decorated with botanical scenes. The custom-made carpet is from Carpet Source.
 Above right and right: Rose quartz is used throughout her bathroom and around the spa tub, with a bespoke mirrored glass used for the furniture.





Above: The custom dining table dominates the main deck salon.

Facing page, above right: Backlit armethyst walls catch the eye in the salon.
Facing page, below right: A fireplace under the TV. Purple and gold upholstery brings a regal touch to the furniture.

Above right: The startling 'Tree of Life' sculpture – 16 metres high – greets guests at the entrance to the yacht and climbs up the decks.

Far right: Forward is the full-beam VIP suite.
Right: There is room for a settee, with artworks by Joelle Lalague of Saint Paul de Venise.

Left: The guest suites use different colours but the same core materials.





its own very unique colour palette, such as umber, cognac and blue. The ceiling lights reminded me of a 1930s cinema, while the fabrics and upholstery had a comforting, touch-me sensuality. The forward full-beam VIP is capable of being converted to two separate cabins – underlining how flexible Solandge is to different parties. In fact, the flexibility of the guest areas is a key feature. One of the guest cabins can be quickly and easily converted into a media centre, while there is a dedicated guest office.

Perhaps the most formal area on the yacht is the main salon, where the main dining table is located in a central position, providing seating for up to 12 guests and is also something of a focal point for the whole space. Above there is a trio of Schonbek chandeliers, decorated in mother-of-pearl, gold leaf and burl inlays with large crystals of amethyst and rose quartz. The Bechstein piano to port adds a homely, living room touch to the space, which is keeping with the elegant vibe of the whole space.

Also catching the eye are the back-lit amethy flanking the sides of the salon. Opposite the pic Venetian mirror and console, while the wooden have an inset gold leaf and stone medallion and wood itself is bordered with honey onyx.

Providing a homely touch forward of the din table, is a very colourful seating area with a view fireplace with a typically smart metallic finish to Based Upon. There's a tucked-away TV here, to. Further aft there is another seating area and bar is accented by curved artwork glass panels upholstered purple fabric, matching the ameth top of the bar, which is patched with diamond-crystal glass pieces.

There is a regal purple and gold theme at wo main salon but it is an enormous space for gue they have no end of seating and gathering opti furniture has been crafted with a sharp eye for can be seen by their finish as well as in the curv bold shapes of the joinery.



The guest experience is crucial throughout, and on *Solandge* a good deal of thought has been put into the importance of bringing guests together in a variety of different spaces – there is the dedicated cinema, of course, but there are a host of places to catch a movie.

Outside on the owner's deck aft there are further options for guests. There is exterior dining for up to 14 on the main table, and a more informal space for six guests at a smaller table. This is a good space in the evening as the sides of the aft deck can be closed with glass panels to create a secluded and sheltered spot should the breeze get up.

There is plenty of inviting seating here, while triangular awnings on carbon-fibre poles provide shade. Columns clad in crystal caviar have internal ambient lighting, creating a wonderful evening location.

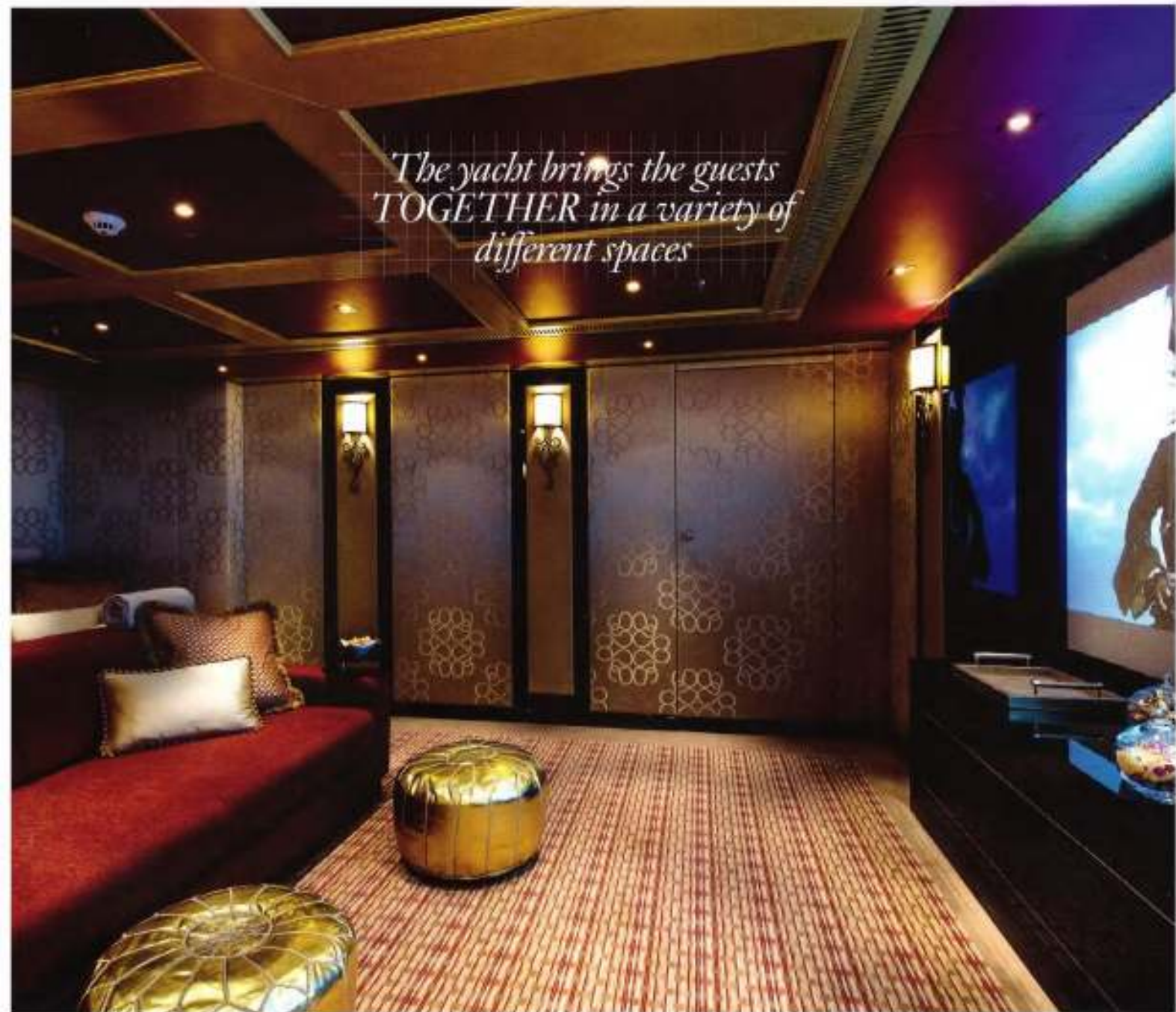
For more active guests, there is a fully equipped dive centre with the latest underwater technology and safety features, while the tender garage is very easily managed by the crew. A 10.5-metre centre console

Naiad RIB and a 7.3-metre *Centurion Enzo* wakeboarding tender live here, both of which can be launched sideways through the shell doors. In addition, there is plenty of space for a host of watersports kit to keep guests busy. It's a few steps through to the beach club with sauna and shower.

The first step for a project on this scale was putting together an experienced team: Richard Masters, the owner's project manager; exterior designer Espen Øino; interior designer Aileen Rodriguez; and the project team at Lürssen.

Though smooth teamwork plays an essential part in a project this huge, of course, there is also the guiding vision of the owner, and this shines through aboard *Solandge*. A lifetime of yacht owning and chartering teaches you a thing or two about how a yacht can best function for oneself and for one's future guests. These lessons – practical, aesthetic and emotional – are vividly on display aboard the superlative spaces of *Solandge*. **SYW**

*The yacht brings the guests
TOGETHER in a variety of
different spaces*



Above: The tank-deck cinema with rich crimson Robert Allen seating.
Left and right: The tender garage is full of distractions for guests. The yacht's tenders and toys can be launched through the side doors.
Facing page, above: The backlit stonework in the cinema's bathroom.
Facing page, far left: The steps down from Solandge's main-deck (top) lead to the swim platform and the water (below).



THE SPECS *Solandge*

Length overall 85.10m (279ft 2in)
 Beam 13.80m (45ft 3in)
 Draught 3.90m (12ft 9in)
 Engines Twin 2,000kW (2,682hp) CAT 3516 C18
 Berths Owner: 2. Guests: 12. Crew: 29
 Displacement 2,296 tonnes
 Hull/superstructure Steel/aluminium
 Naval architecture Lürssen

Exterior designer Espen Øino
 Interior designer Rodriguez Interiors
 Classification LRS, #100A1 SSC Yacht (P) Mono G6 + LMC UMS

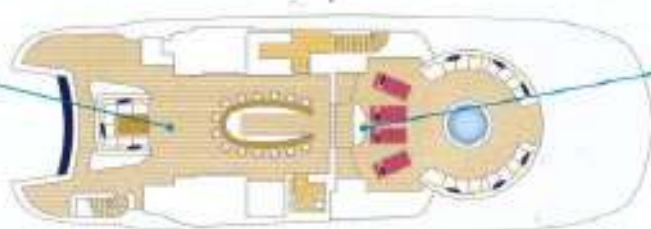
PERFORMANCE NOTES
 Top speed 17 knots
 Range @ 12 knots 6,000 nautical miles

BUILDER
 Lürssen Yachts, Zum Alten Speicher 11, 28759 Bremen, Germany. Tel: +49 (0)421 6604 166
 Email: yachts@lurssen.com
 Website: www.lurssen.com

• Solandge will be on display at the Monaco Yacht Show in September

SUNDECK: The after area has a starlight panel and surrounding drapes.

SUNDECK: makes evening



BRIDGE DECK: A small bar area for some post-gym relaxation.

BRIDGE DECK: areas in the aft



OWNER'S DECK: Great lounging areas either side of the owner's deck salon.

OWNER'S DECK: and relaxation for the owner



MAIN DECK: A Bechstein piano shows the owner's love of classical music.

MAIN DECK: forward VIP two suite



BEACH CLUB: There's a pantry, a shower, a sauna and a day head.

CREW AREA: 15 cabins separate set



An aerial photograph of a large, multi-deck motor yacht with a dark blue hull and white superstructure, moving across a deep blue sea. The yacht has several decks with various amenities, including a hot tub, seating areas, and a bar. The background shows a lush, green coastline with hills and a small white boat in the distance. Callout boxes with blue lines pointing to specific areas of the yacht are overlaid on the image.

OWNER'S AREA.
A spot forward with hot-tub and seating.

SUNDECK: There are 14 stools around the horseshoe-shaped bar.

OWNER'S DECK: Half-moons of fixed seating make for a sociable spot.

SUPERSTRUCTURE: Blue detailing matches the hull colour in places.

OWNER'S WING STAIRS:
A fine place to enjoy coffee up or down.

BIG WINDSCREEN:
full-beam main-deck flooded vinyl.

MAIN ENTRANCE:
are greeted by the 'Life'.

OUTSIDE AREAS:
use of shades options.